



# Slinden Services Ltd

Cast Iron Welding and Engineering

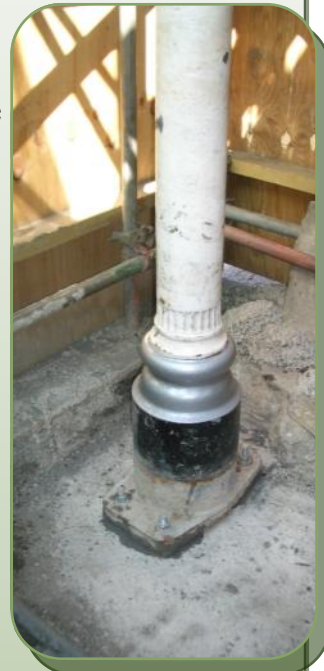
## Rickmansworth Station

We were recently contacted by Network Rail who had a damaged cast iron column at Rickmansworth Station, this damage was caused by a lorry reversing into the column. Rickmansworth is a London Underground and National Rail Station North West of London.

After an on site inspection by one of our engineers, the most cost effective option for repair was to undertake on-site repairs by way of using our metal stitching procedures for cast iron.

This work was carried out on site within normal working hours over two days without any closure of the station - only localized fencing around the column complying with Health and Safety.

For any Architectural Restorations please call us for a survey/quotation.



- On Site Inspection
- Metal Stitching
- ASME IX Welding Codes
- Full Shot Blasting
- Painting As Required
- Re-Casting Service
- 2 Year Guarantee

*Breathing new life into  
damaged cast iron components*

L3 Olympic House, Westminster Industrial Estate, Measham, Derbyshire, DE12 7DS

Telephone: 00 44 (0) 1530 274646 Fax: 00 44 (0) 1530 274647 Email: [info@slinden.co.uk](mailto:info@slinden.co.uk)